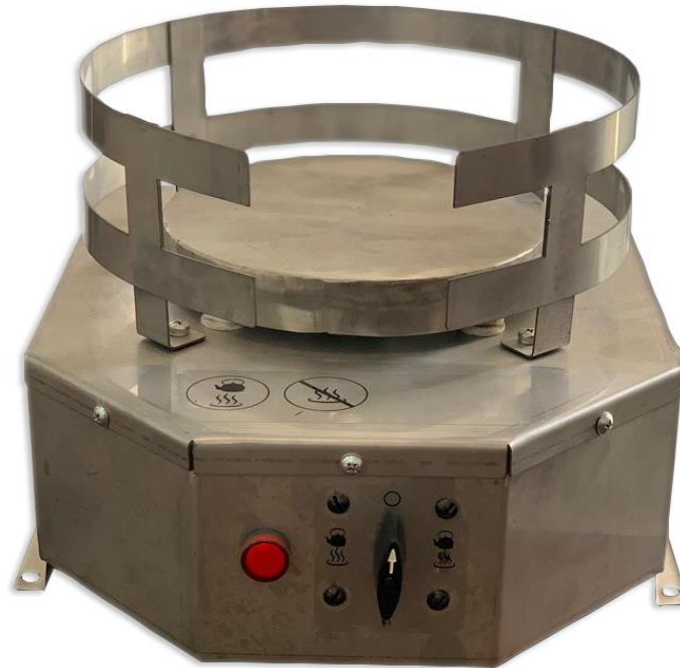


Locomotive Cab Hot Plate



- Part Name: ***Locomotive Cab Hot Plate***
Part Number: ***WPS-0004021***
Part Application: ***As a warmer for water kettle or food pot***
Alloy: ***Full Stainless Steel 304***
Type of Element: ***Embedded in casted cast-iron with stainless steel cover***
Thickness of body: ***1.5 mm***
Dimensions (mm): ***L 319 * W 310 * H 240 (±3)***
Dimension of holder (mm): ***Q 280 * L 100***
Type of joints and connections: ***Stainless Steel***
Indicator: ***Red indicator for ON/OFF position***
Input Voltage: ***74 VDC***
Input Power Cord: ***20AWG – 2 Cords***
Type of Used Wires: ***Silicon coated wire specially for high temperatures***
Utilization: ***On all type of locomotives including EMD and GE Locomotives***
Levels of Heating: ***2 stages – Low (375W) and High (750W)***
Type of Switch: ***Rotary snap – 3 positions: OFF, Low and High***
Warranty Period: ***12 Months***

This part is designed for mobile and railroad purposes.